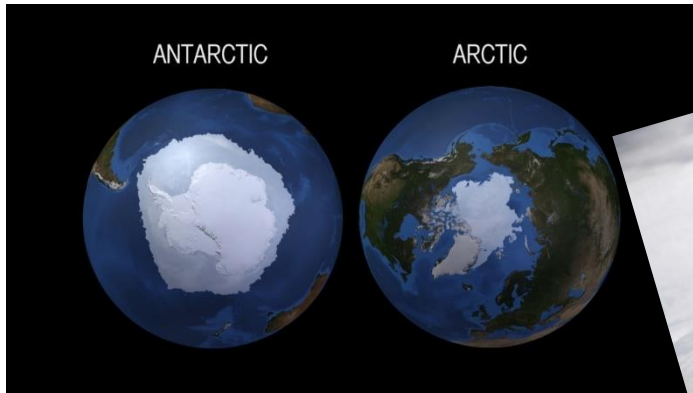


Winter Wonderland

Enquiry and Resilience

This topic links with our **Enquiry, Perseverance and Resilience** drivers as we learn about Winter and explore frozen landscapes beyond our village. We will focus on developing our own resilience and perseverance as we tackle new challenges.



The Big Question: How can you melt snow and ice?

The Big Question: what are the signs of Winter?

The Big Question: which animals hibernate in Winter?

Lines of enquiry:

- To talk about signs of Winter and the differences between Winter and Autumn
- To learn about animals that live in the Arctic and Antarctic
- To talk about how climate change is affecting the animals that live there
- To learn about different environments and talk about differences and similarities with our local environment.

Focus texts:



Key vocabulary:

- diet prey
- polar endangered
- climate change
- habitat
- predators
- arctic
- antarctic
- melting
- hibernation